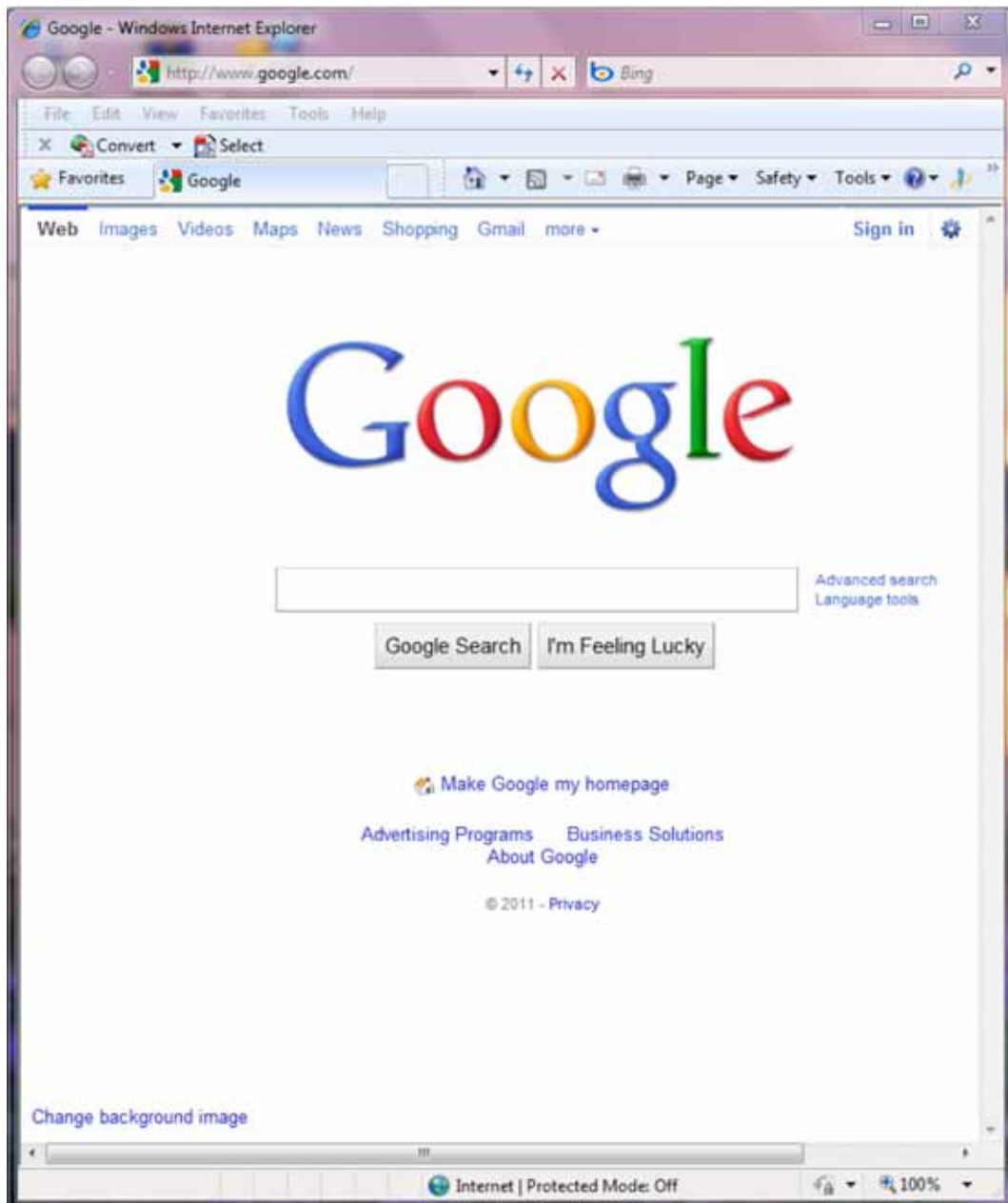
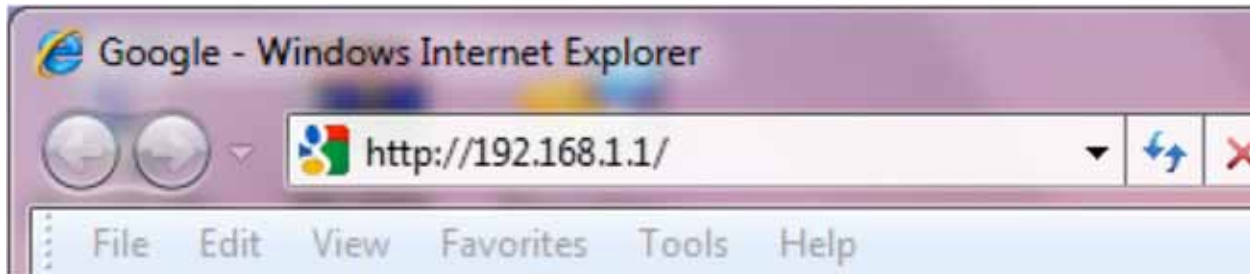


# Changing your Router Name and setting up Wireless Security for your InterBel.net Comtrend Wireless Modem/Router

Open your Internet Browser (Internet Explorer, Firefox, Chrome)



Erase the address bar and type in 192.168.1.1



When prompted for username and password type in the following:



Username: root

Password: 12345

This will load you into the Comtrend ADSL2+ Router Configuration Page.

**COMTRENDS**  
**ADSL Router**

**Device Info**

Board ID:	96348AT-222
Software Version:	A111-306IBT-C01_R09.A2pB022c3.d20d
Bootloader (CFE) Version:	1.0.37-6.8
Wireless Driver Version:	3.131.35.4.cpe2.0

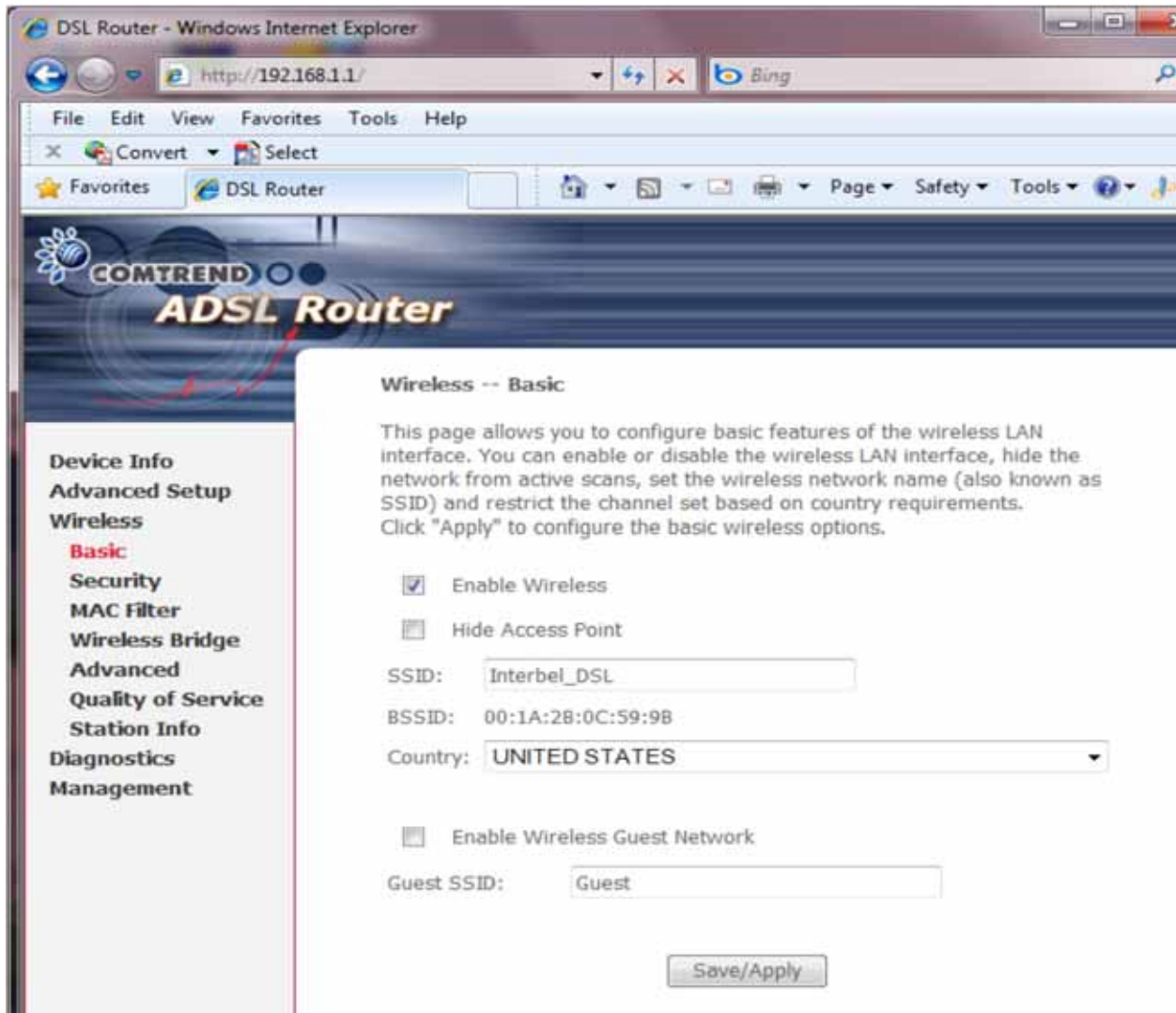
This information reflects the current status of your DSL connection.

Line Rate - Upstream (Kbps):	566
Line Rate - Downstream (Kbps):	6398
LAN IP Address:	192.168.1.1
Default Gateway:	10.12.0.1
Primary DNS Server:	65.19.234.242
Secondary DNS Server:	216.220.3.129

**Device Info**  
**Advanced Setup**  
**Wireless**  
**Diagnostics**  
**Management**

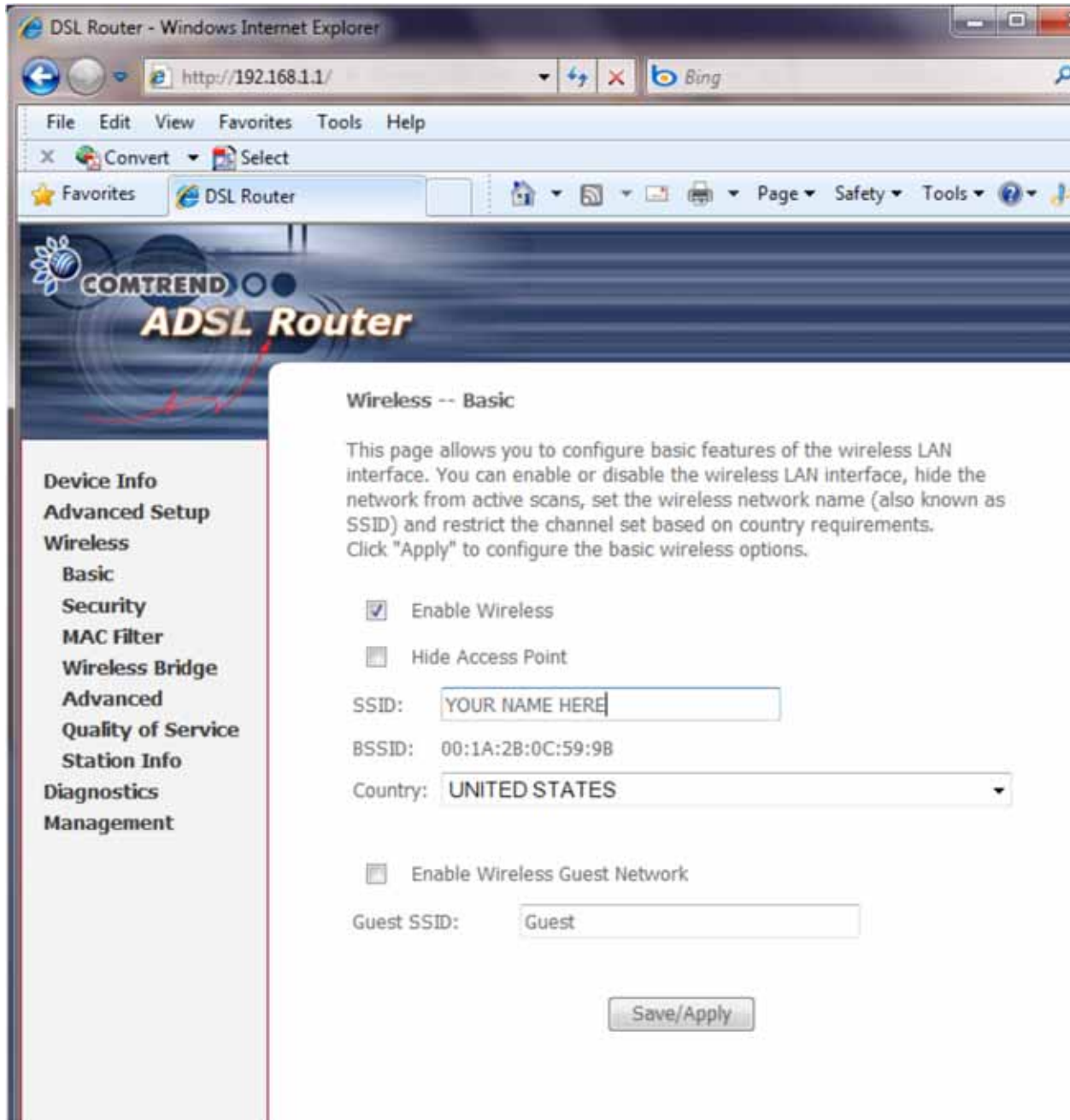
On the left hand side of the screen, you will notice 5 options (Device Info, Advanced Setup, Wireless, Diagnostics, and Management).

Select Wireless from this list of options.



This will load the basic settings for your wireless connections.

In order to change the name of your router, locate the SSID Field on the Basic Page. This can be named anything you want, but cannot have any spaces in the name. Make sure you pick a name that is unique to you in order to avoid duplicate SSID's.



After you have completed this step, you will need to save your settings.

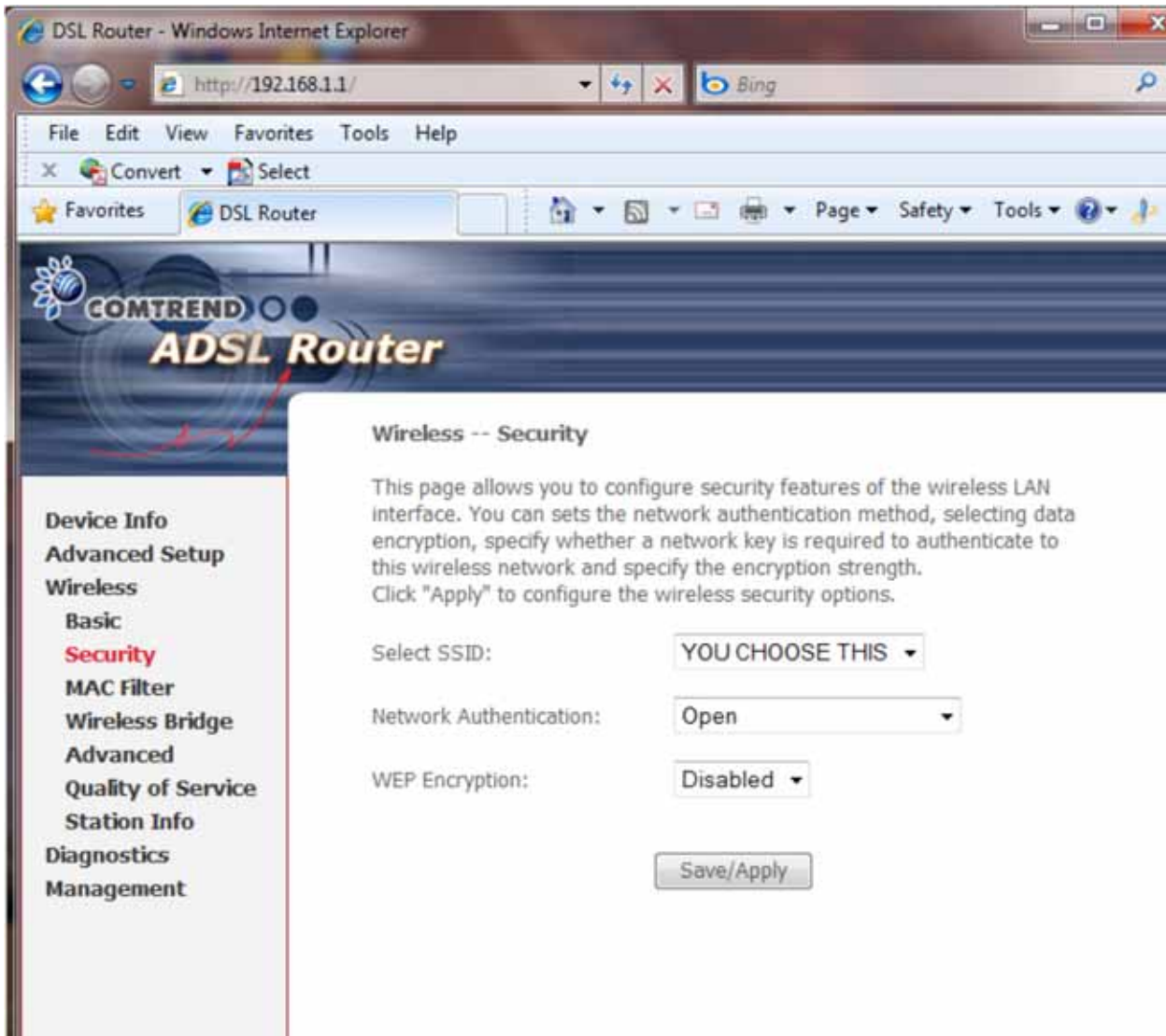
Save/Apply

Upon saving your settings, you will be disconnected from your wireless network, because the name has changed. Please reconnect to your wireless network using your new SSID.



After you have completed this, you will navigate back to the Wireless section in order to set a password on your wireless network. (Please review the steps above for that).

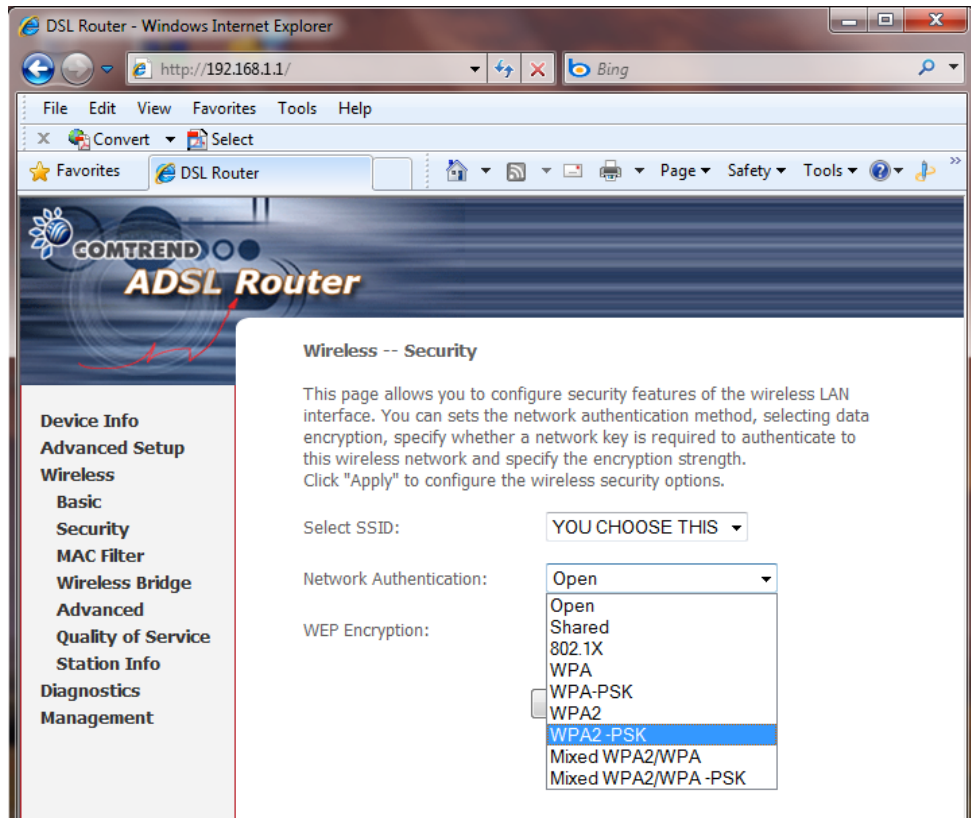
Once you have returned to the wireless section, select the security link to continue.



Make sure the Selected SSID is set the SSID that you have just created.

From here you have multiple forms of encryption options. The standard for today is WPA2, which is the highest security at the present time.

If you choose to protect your network with WPA or WPA2, please use the Network Authentication drop down and select the desired form of encryption.



When selecting these two options, please select the WPA-PSK or WPA2-PSK, this will require you to have an 8 character password.

#### Wireless -- Security

This page allows you to configure security features of the wireless LAN interface. You can sets the network authentication method, selecting data encryption, specify whether a network key is required to authenticate to this wireless network and specify the encryption strength. Click "Apply" to configure the wireless security options.

Select SSID:

Network Authentication:

WPA Pre-Shared Key:  [Click here to display](#)

WPA Group Rekey Interval:

WPA Encryption:

WEP Encryption:



You may also choose the former encryption standard of WEP.

DSL Router - Windows Internet Explorer

http://192.168.1.1/

File Edit View Favorites Tools Help

Convert Select

Favorites DSL Router

COMTREND ADSL Router

### Wireless -- Security

This page allows you to configure security features of the wireless LAN interface. You can set the network authentication method, selecting data encryption, specify whether a network key is required to authenticate to this wireless network and specify the encryption strength. Click "Apply" to configure the wireless security options.

Select SSID: YOU CHOOSE THIS

Network Authentication: Open

WEP Encryption: Disabled  
Disabled  
**Enabled**  
Save/Apply

Device Info  
Advanced Setup  
Wireless  
Basic  
Security  
MAC Filter  
Wireless Bridge  
Advanced  
Quality of Service  
Station Info  
Diagnostics  
Management

There are only two options from this menu, 64 or 128 bit encryption. If you select 64 bit encryption, your password must contain to 5 characters.

**Wireless -- Security**

This page allows you to configure security features of the wireless LAN interface. You can sets the network authentication method, selecting data encryption, specify whether a network key is required to authenticate to this wireless network and specify the encryption strength. Click "Apply" to configure the wireless security options.

Select SSID:

Network Authentication:

WEP Encryption:

Encryption Strength:

Current Network Key:

Network Key 1:

Network Key 2:

Network Key 3:

Network Key 4:

Enter 13 ASCII characters or 26 hexadecimal digits for 128-bit encryption keys  
Enter 5 ASCII characters or 10 hexadecimal digits for 64-bit encryption keys

If you select 128 bit encryption, your password must contain 13 characters.

**Wireless -- Security**

This page allows you to configure security features of the wireless LAN interface. You can sets the network authentication method, selecting data encryption, specify whether a network key is required to authenticate to this wireless network and specify the encryption strength. Click "Apply" to configure the wireless security options.

Select SSID:

Network Authentication:

WEP Encryption:

Encryption Strength:

Current Network Key:

Network Key 1:

Network Key 2:

Network Key 3:

Network Key 4:

Enter 13 ASCII characters or 26 hexadecimal digits for 128-bit encryption keys  
Enter 5 ASCII characters or 10 hexadecimal digits for 64-bit encryption keys

After you have completed this, click on the Save/Apply button.



This will force your router to reboot. After your Router has rebooted, you will need to reconnect to the wireless network again, this time, it will prompt your security key (password). Enter the password you just created and then click on connect. This will reconnect you to your newly secured wireless network.